

The Evolution



PANTHER[®]

Evolution





There is only one original – Panther!

Higher performance.

Better steering.

Less weight.

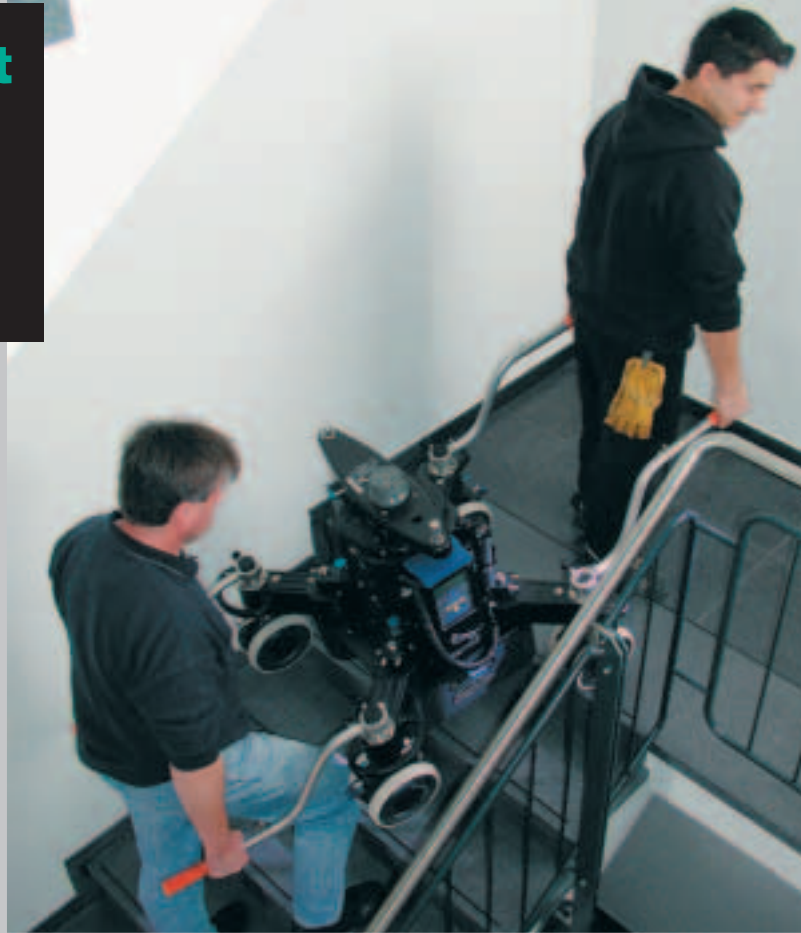
No other dolly manufacturer can look back at a tradition similar to Panther's. The first dolly was built in 1975. In 1982 the first electromechanical dolly was a revolution among the existing dolly systems. The Super Panther was awarded the technical Oscar in 1990.

Looking back it shows that Panther has not been following any trends – quite on the contrary. Panther establishes trends.

Here it is: the new Panther *Evolution* – the result of a 25 years evolution. Well-proven features have been maintained, new wishes were realized.



**The Panther light-weight construction.
Saves more than
only weight.**



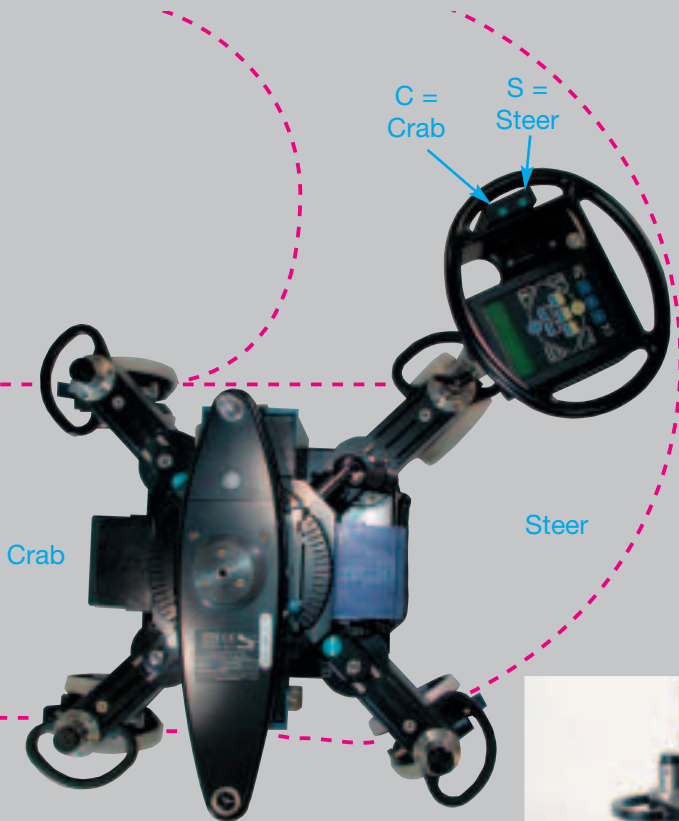
Separable carrying handles were developed according to ergonomic aspects.

For the Evolution only light aircraft aluminum and high-strength plastics were used. The column was designed as a compact unit together with the body. The transport weight of the dolly only amounts to 96 kg (210 lbs) – this means that the dolly does not have to be disassembled for transportation. This specially designed light-weight construction saves weight and time.



For longer distances use the specially designed transport cart.

The steering – well-proven on the one hand – completely new on the other.



According to our evolution philosophy the steering is a new patented construction. The Crab+Steer steering gear switches between the well-proven 4-wheel-steering to a 2-wheel steering, either manually or via remote signal by pushing a button.

The perfect steering geometry ensures that even during longer straight drives the dolly keeps in line. All chains are inside and thus protected against dirt and humidity.



Besides soft studio wheels, also hard studio wheels as well as air tires can be mounted without any tool. If required, distance axes additionally increase ground clearance.

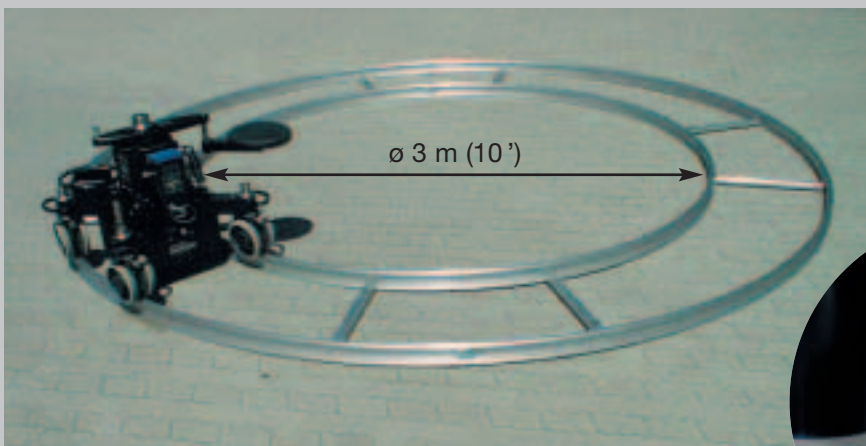
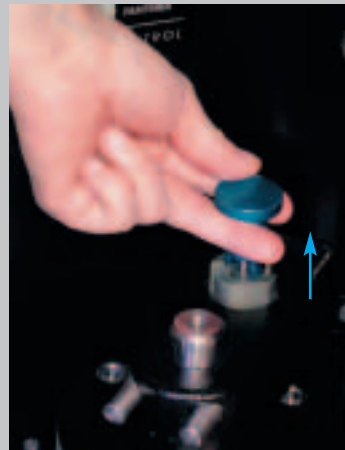
For fast tracking also very stable H-wheels are available, upon request with soft-, hard- or pneumatic wheels.



Due to a screw connection the height-adjustable steering rod remains positioned steadily. In addition the rod can be used as short steering rod. Various steering rod accessories are available.



The security bolts can be fixed in the „open position“, thus enabling a perfect adjustment to the tracks – in particular in curves.

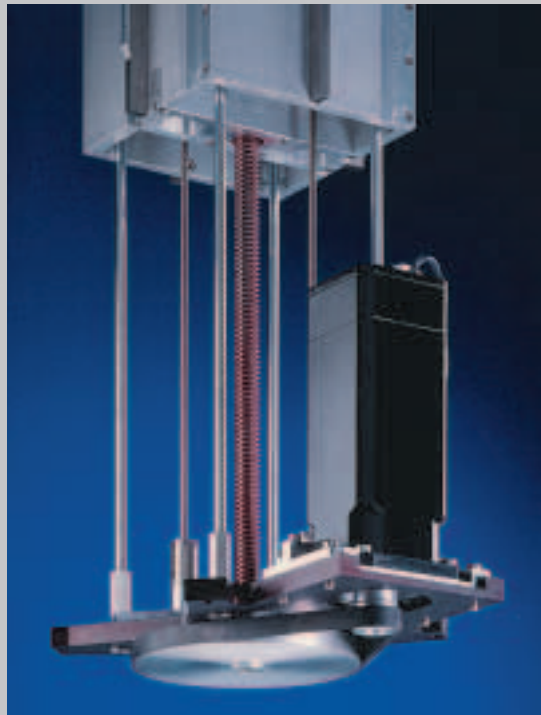


The Evolution Dolly perfectly adapts to all round tracks. Neither the thickness of the track's tube diameter nor the size of the track radius matter. The picture shows the Evolution on a full circle with Precision Vario tracks, radius of 1.5 m (5').

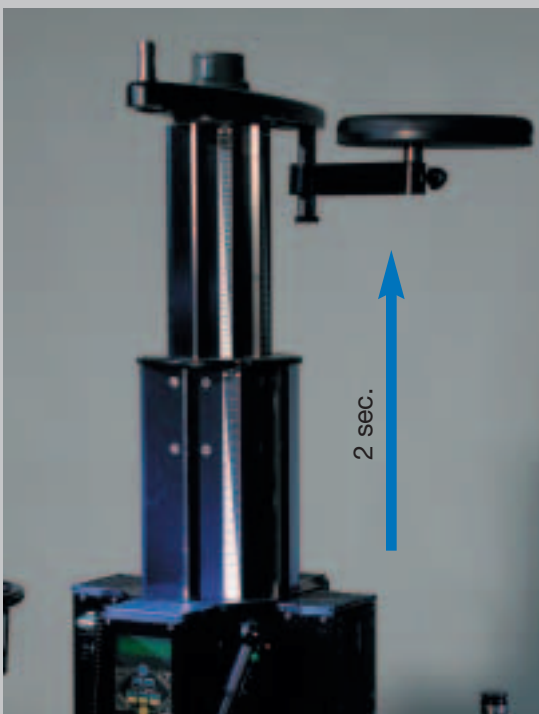


Compared to the Super Panther III, the weight and the rolling resistance of the new V-wheels could be considerably decreased while improving the handling. The double support of the track wheels in axes direction now enables maneuvering on track circles of smallest radius.

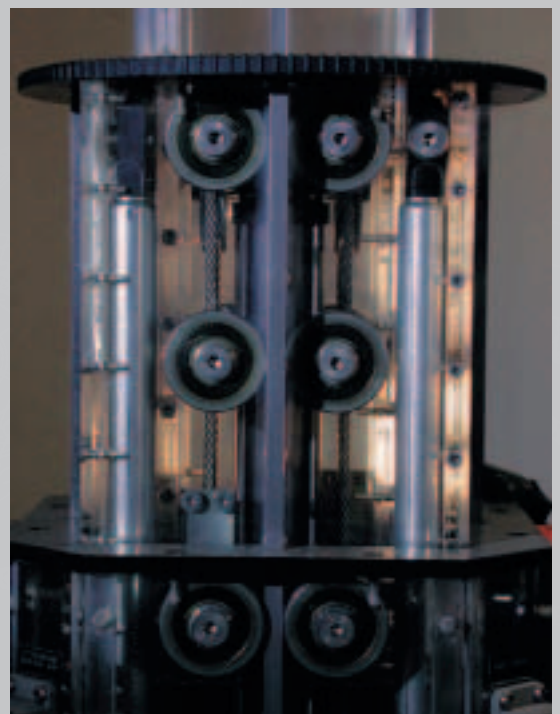
More performance



The Evolution was designed with a completely new drive technology. The motor is brushless and thus maintenance-free. Its performance was nearly doubled. This again influences both the drive speed and a smooth column movement.



For speeding up from 0 to 100 % the Evolution only requires 2 seconds. The maximum lifting force is 250 kg (550 lbs).



Smooth drives, in particular for zoom shots, are unmatched, due to the patented Panther column.

More safety



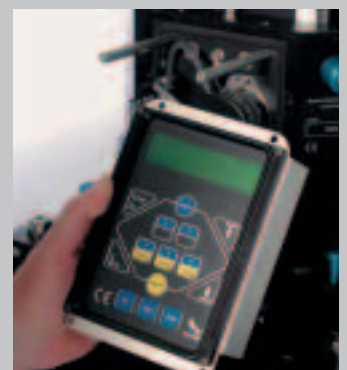
Greatest importance was attached to safety as one of the prime issues of the Evolution. Therefore, for example slack rope switches were integrated into the column, which automatically stop a downward movement in case of danger. Parts of the body eventually trapped will be released immediately, because the rope guide of the upper column element would stop immediately for safety reasons. This means that in case of emergency this column element can be extended manually.

The use of a special column cover made of GoreTex protects against humidity and dirt also during operation. The tool box offers storage space for utensils at each side.



A comprehensive technical documentation, a Hotline at Panther and our Internet pages contribute to facilitate service works as well as the ordering of accessories and spare parts.

All electronic components were designed as modules so that they can be replaced quickly and easily. Their reliability was considerably increased.

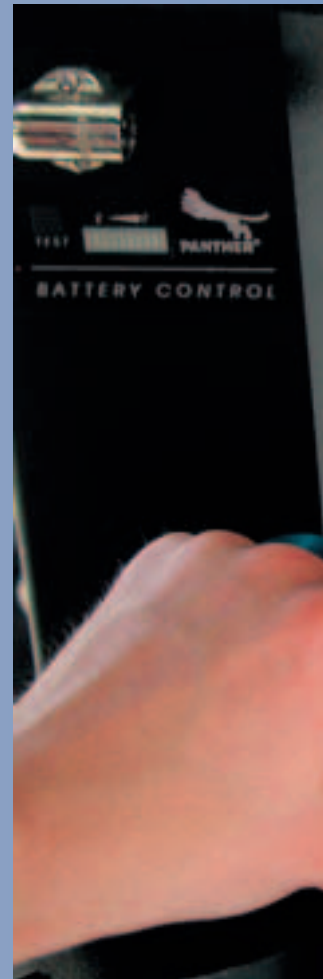


**More robustness.
Easier.
More versatile.**

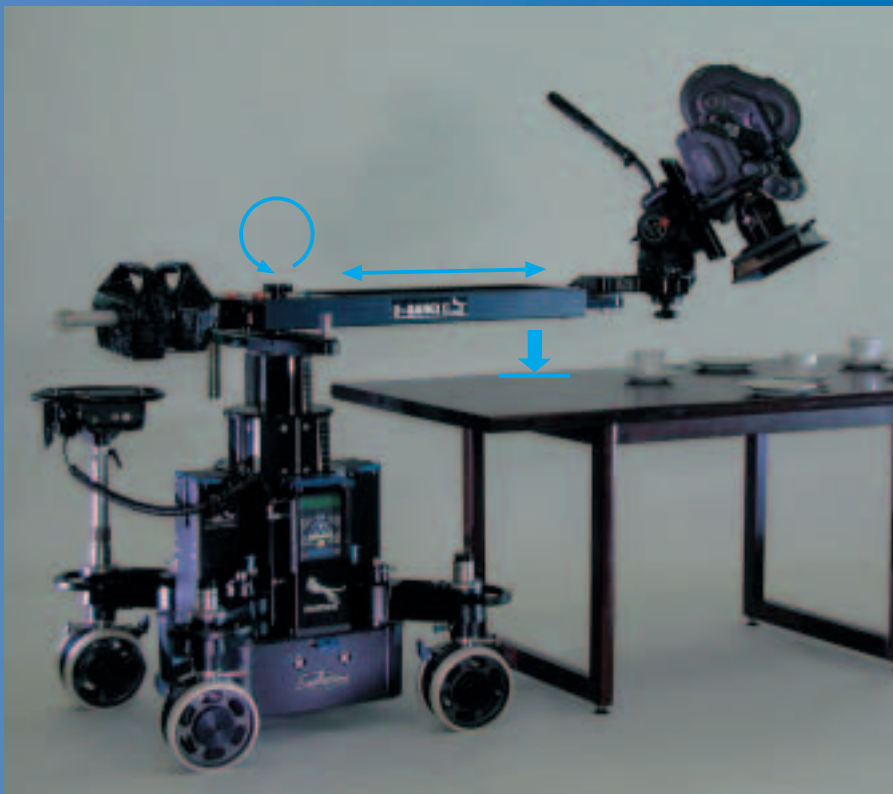


The features of the digital hand control set:

- Connection adapter for different tube diameters
- Ergonomic due to round shape, light and compact
- Self-adjusting rocker
- 2 cable connections
- On-/Off-/Emergency Stop switch
- Action button
- Length adjustable



The hand control set can be adjusted to your individual requirements.



An example: a certain height has to be maintained. Setting a limit is performed by simply pushing a button. You can approach this limit exactly, without any risk to exceed this point. Many other possibilities such as High speed, motion control or operating hours counter can be accessed if required.

The digital electronic based on state-of-the-art technology with regard to software and operation gives room to realize creative ideas. **Easy handling** with software supported operator guidance as well as performance and reliability are unmatched.



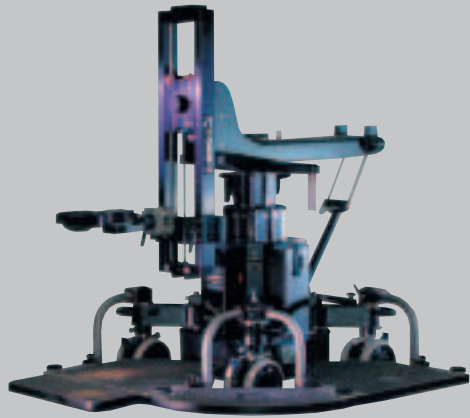
With the cockpit all dolly functions can comfortably be controlled and checked from the steering rod.

e.g.
 Column height = 32.3%
 S : 4 = speed 4
 R : SOFT = ramp soft



The Super Jib I offers a platform height of 230 cm (7.5') for one person with a payload of 130 kg (290 lbs).

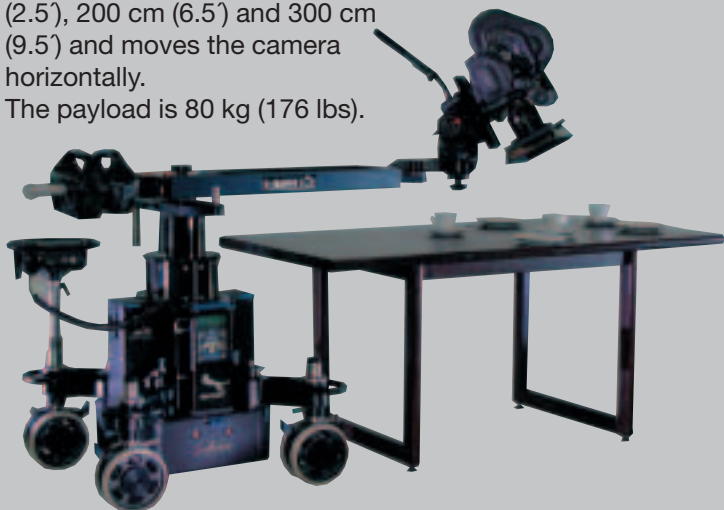
The continuously adjustable and separable low rig can also be used as offset or high rig. Its payload is 130 kg (290 lbs).



The U-Bangi Lifter represents a unique camera lifting system which enables absolutely straight vertical drives. In contrast to all Jib arms there is no "banana effect". The payload is 100 kg (220 lbs).



The U-Bangi II is available in lengths of 70 cm (2.5'), 140 cm (4.5'), 200 cm (6.5') and 300 cm (9.5') and moves the camera horizontally. The payload is 80 kg (176 lbs).



The Lightweight jib can be operated manually as well as electronically at the Evolution. The running board bracket with platform can also accommodate a person. The payload of the Lightweight jib is 80 kg (176 lbs).



Low Shot – High Shot –



The Super Jib II is a system that can be expanded up to 10 versions. The picture shows the standard version for 2 persons with a platform height of 2.7 m (8.5) and a payload of 220 kg (485 lbs).



Further information about accessories in the special brochure

Evolution



... creativity is essential!

Any Shot!

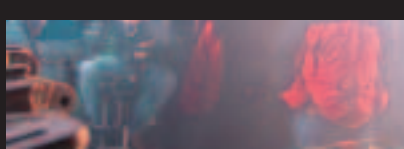
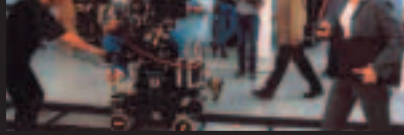
Besides ample basic equipment a wide range of accessories is available for the Evolution.

The ring platform offers a comfortable stand for the feet and more safety during panning.



The Vario Jib can be operated manually and electrically. The Multi-Rig offers adjustment possibilities in 3 axes. The ground platform offers enough space for operation.





Dimensions:

Length:	84 cm (33")
Width:	min. 53,5 cm (21") / max. 82,5 cm (32.5")
min. height:	68 cm (26.5")
max. height:	138 cm (54.5")
	narrow track / wide track
Track width:	36 cm (14") / 62 cm (24.5")
Wheel base:	75 cm (29.5") / 62 cm (24.5")
Ground clearance:	2,5 cm (1")
Ground clearance with distance axes:	6,5 cm (2.5")
Column lift:	100 % (68 cm / 27")
Turning circle:	197 cm (6.5')

Electrical data:

max. speed:	2 sec. (0-100%)
Battery charging time with Combi charger (2 batteries):	7 hrs
Operating time with 2 batteries with 250 kg load (20°C):	150-300 drives
allowable temperature range:	- 20°C bis + 70°C

Weights:

Transport weight:	96 kg (210 lbs)
Operating weight:	136 kg (300 lbs)
Column lifting force:	250 kg (550 lbs)

Subject to technical alterations without notice

The new Panther Evolution continues to maintain the basic advantages of its predecessor. Simultaneously it represents an unprecedented innovation. The Evolution is a completely new dolly resulting from a continuous evolution over a period of more than 25 years.

Your Dealer



PANTHER GMBH
 Raiffeisenallee 3
 82041 Oberhaching-Munich
 Germany
 Tel.: +49 89/61 39 00-01
 Fax: +49 89/6 13 10 00
 e-mail: contact@panther.tv
<http://www.panther.tv>

